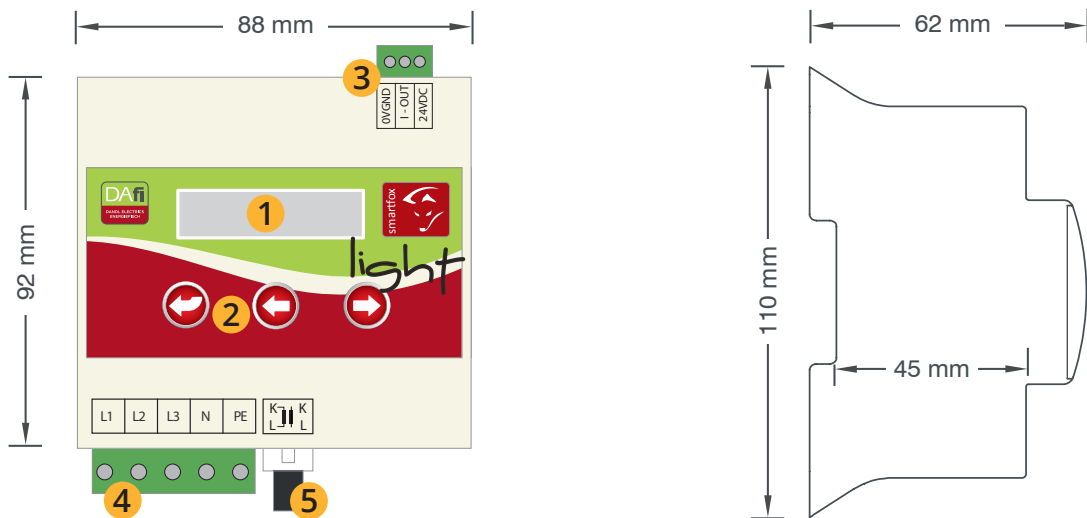




SMARTFOX LIGHT

Technical Specifications



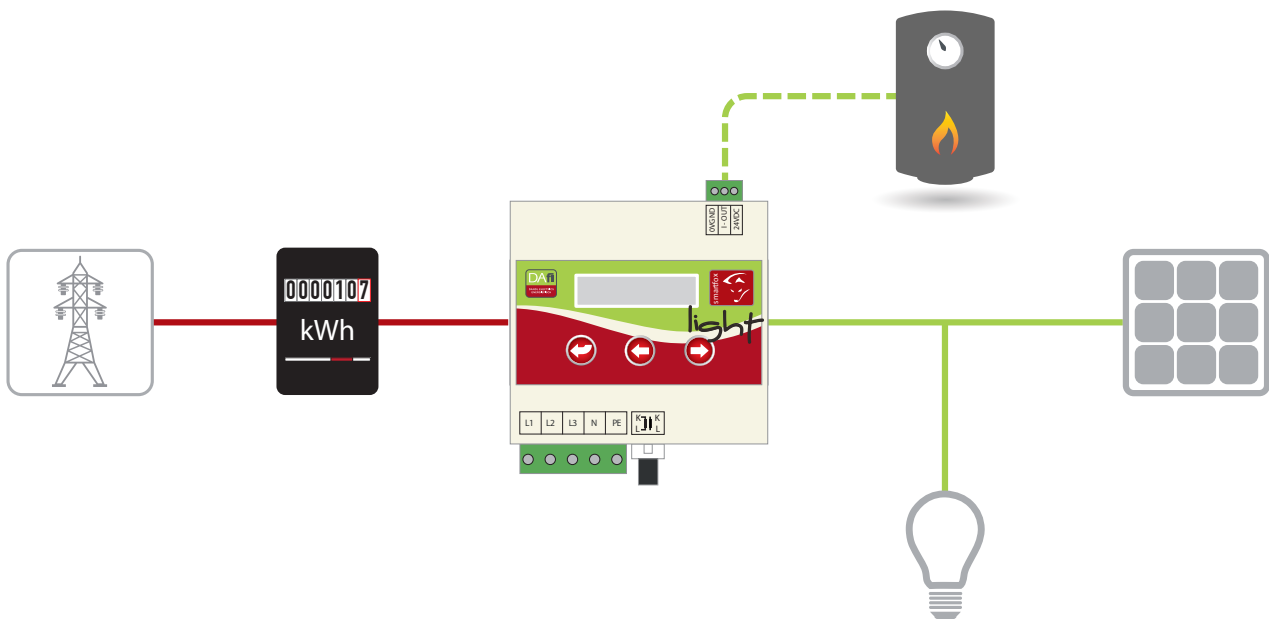
- 1 2-Line display to show data and settings
- 2 3 buttons for easy operation
- 3 Analog And 24VDC outputs for continuous consumer control
- 4 Power Supply (1x 230V+N+PE, 3x 400V+N+PE/ 50Hz)
- 5 Current transducer connection via RJ12 plug (80A transducer included)

Technical Specifications

	smartfox Light
Dimensions [WxHxD]	80mm x 110mm x 62mm
Nominal Current	80A or 4995A with an additional transducer
Power Supply	3 x 230/400VAC 50 Hz
Self-Consumption	3-4W
Display	2-line display
Analog Outputs	1 x 24VDC 1 x 0/4-20mA
Switchable Outputs	-
Interface	-
Included Accessories	80A current transducer

smartfox Light intelligently manages your solar energy so you don't have to!

smartfox Light's intelligent technology automatically redirects your excess solar energy to consumers within your home to improve your photovoltaic system's efficiency. Smartfox light efficiently takes advantage of water's ability to store energy, by redirecting your surplus energy to devices that heat water, like your boiler for example. If your solar energy is not being used, these consumers provide ideal energy storage in the element of water. Improve your home's energy efficiency now with the smartfox Light.



DAfi GmbH

Niedernfritzerstraße 120
A-5531 Eben im Pongau
TEL +43 (0) 6458 / 20 160